

The attached GeoReferenced PDF maps show the different suggested Christmas tree cutting areas managed by the Salt Lake Field Office. GeoReferenced PDFs are maps that can be printed or when uploaded to a device with a GPS like a smartphone, they can be used to find yourself on the map, measure distances and areas, mark places, and share your location.

For an app like Avenza Maps, PDF Maps, and TerraGo Edge the easiest way to open the map is to locate the file in your email and open it with your app by sharing or sending it to the app.

Once open, you can see the map and if you are within the border, you should see a marker indicating where you are. Use this to identify where you want to cut and the best way to get there. Some apps may need internet, subscription, or license. You choose and use the app you want. The BLM does not recommend or support any app.

These Christmas tree cutting maps are highlighting suggested areas to cut. You are permitted to cut on any BLM lands except for **CAMPGROUNDS, WILDERNESS STUDY AREAS, SPECIAL RECREATION AREAS and INDICATED CRUCIAL HABITAT**. Please use the referenced maps to avoid those areas.

Click below on a cutting area name to locate it on a map and directions.

[Bismark Peak](#)

[Broad Canyon](#)

[Chuilos Canyon](#)

[Emigrant Pass](#)

[Hill Springs](#)

[Lofgren](#)

[Raft River](#)

[Silverado Canyon](#)

[South Soldier](#)

Salt Lake Field Office Forest Products Popular Harvest Location Map

BUREAU OF LAND MANAGEMENT
SALT LAKE FIELD OFFICE

R 8 W

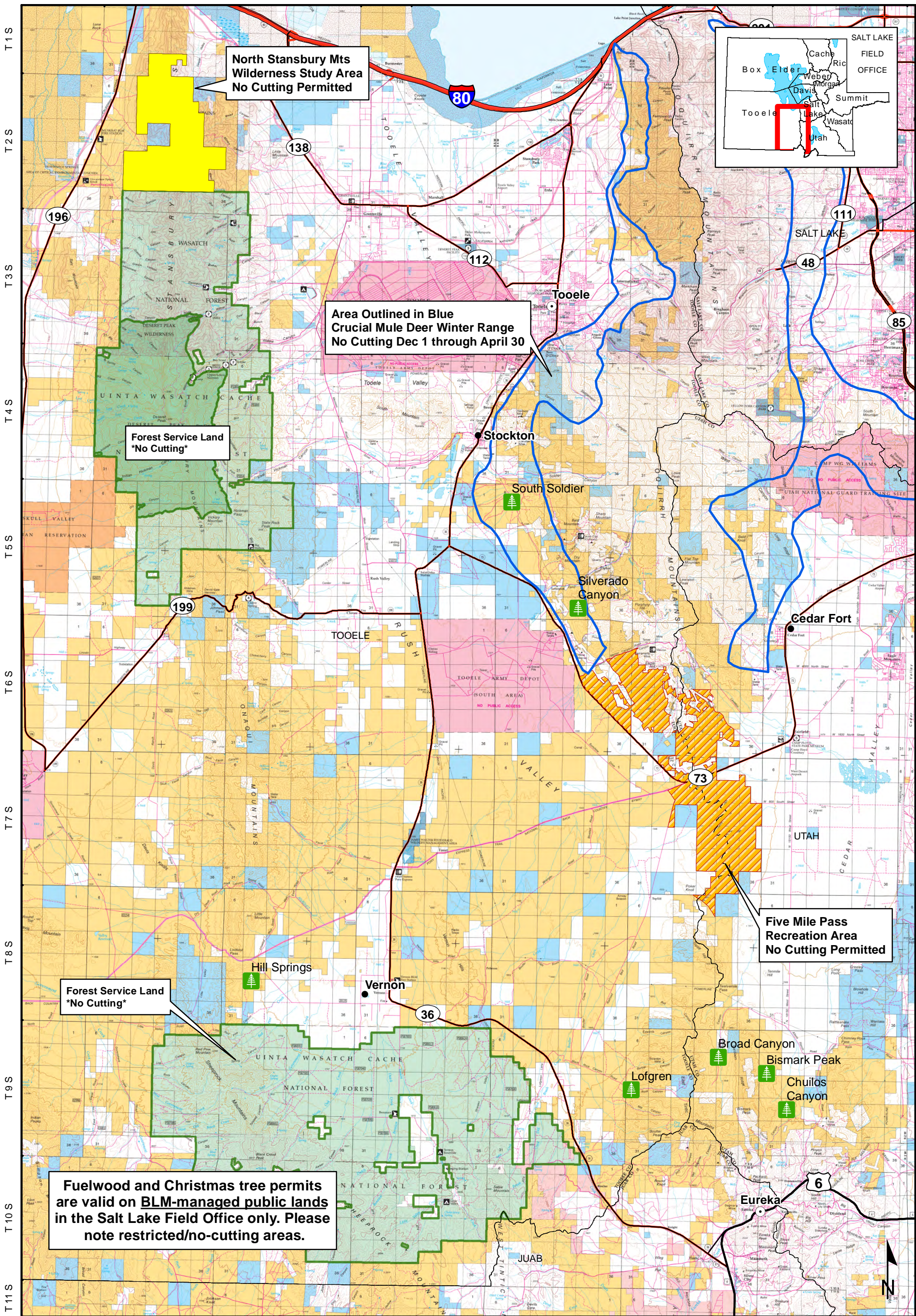
R 7 W

R 6 W

R 5 W

R 3 W

R 2 W



North Stansbury Mts
Wilderness Study Area
No Cutting Permitted

Area Outlined in Blue
Crucial Mule Deer Winter Range
No Cutting Dec 1 through April 30

Forest Service Land
No Cutting

Five Mile Pass
Recreation Area
No Cutting Permitted

Forest Service Land
No Cutting

Fuelwood and Christmas tree permits
are valid on BLM-managed public lands
in the Salt Lake Field Office only. Please
note restricted/no-cutting areas.



No warranty is made by the Bureau of Land Management as to the accuracy, reliability, or completeness of these data for individual use or aggregate use with other data.

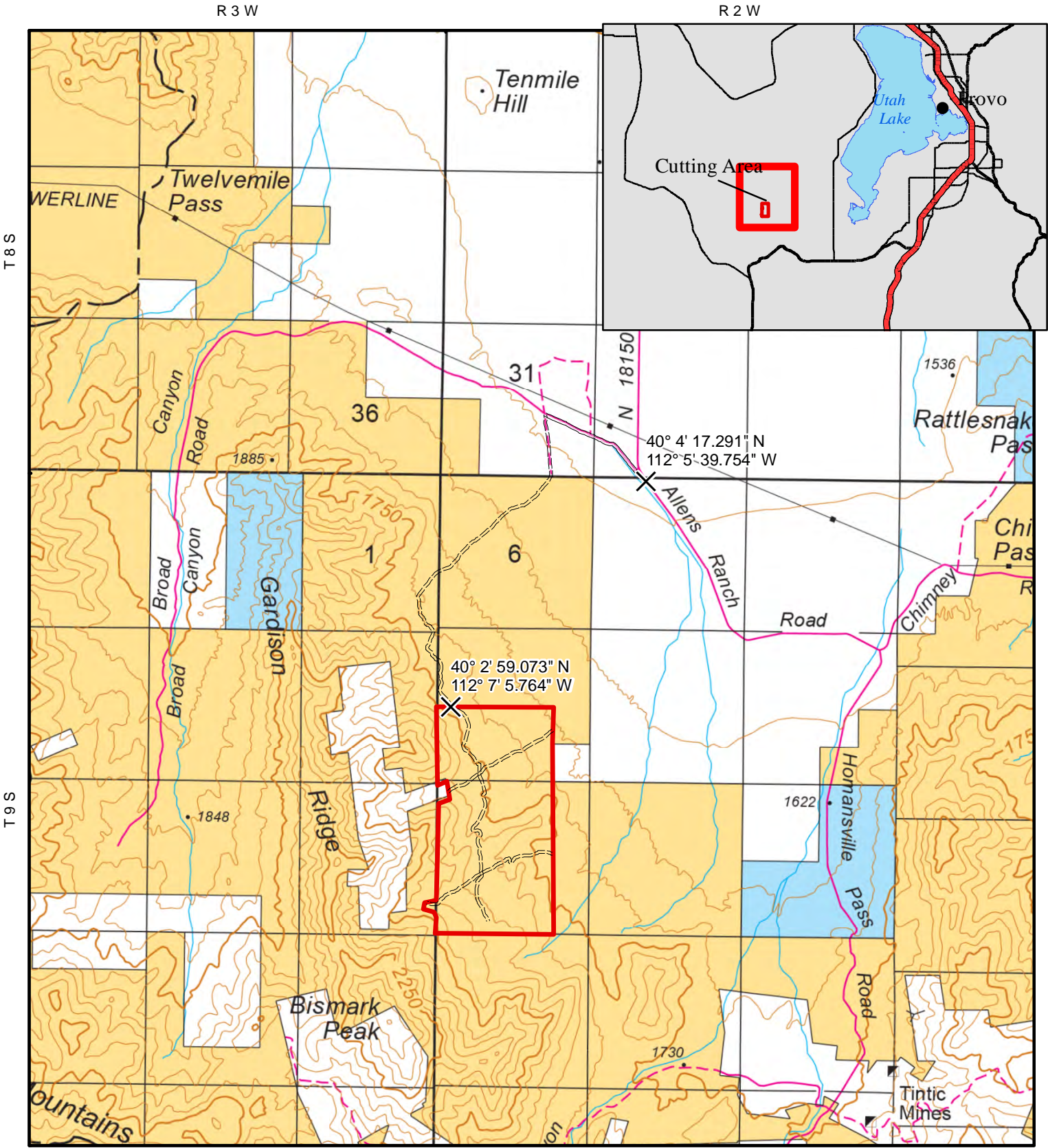


0 2.5 5 10 Miles

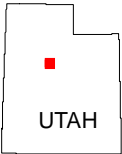
December 5, 2022

	Christmas Tree Stand		Private
	Surface Ownership		State
	Bureau of Land Management (BLM)		State Parks and Recreation
	Bankhead-Jones Land Use Lands		State Wildlife Reserve/Management Area
	Indian Reservation (IR)		US Forest Service (USFS) - No Cutting
	Military Reservations and Corps of Engineers		USFS Wilderness Area - No Cutting

Bismark Peak Christmas Tree Cutting Area



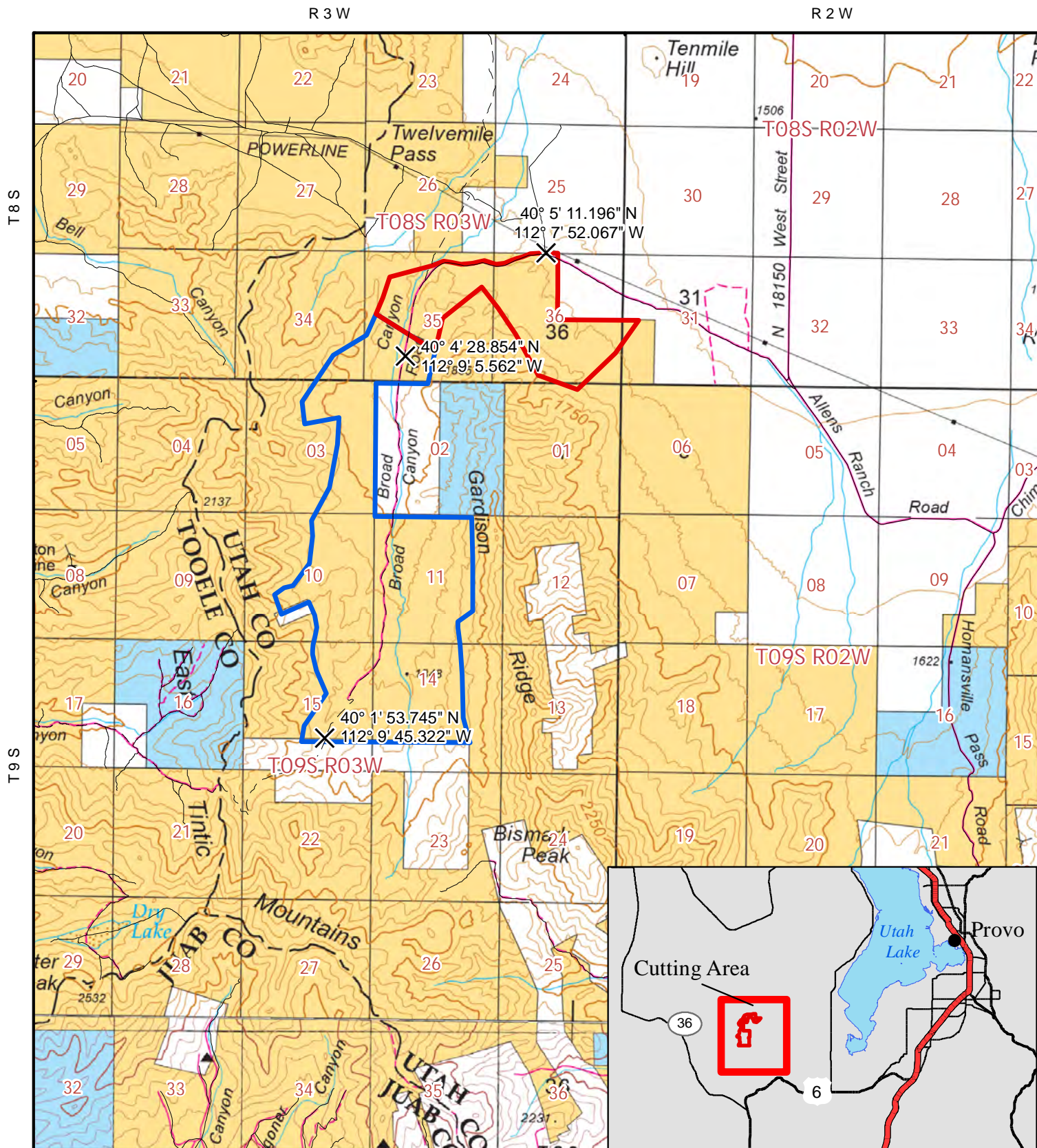
- Bismark Peak Unit
- Reference Point
- Bureau of Land Management (BLM)
- Private
- State



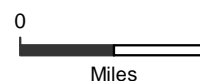
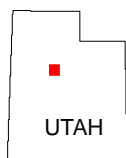
December 05, 2022

No warranty is made by the Bureau of Land Management as to the accuracy, reliability, or completeness of these data for individual use or aggregate use with other data.

Broad Canyon Christmas Tree Cutting Area



- ✕ Reference Point
- No Cutting After November 30
- No Date Restriction
- BLM
- Private
- State

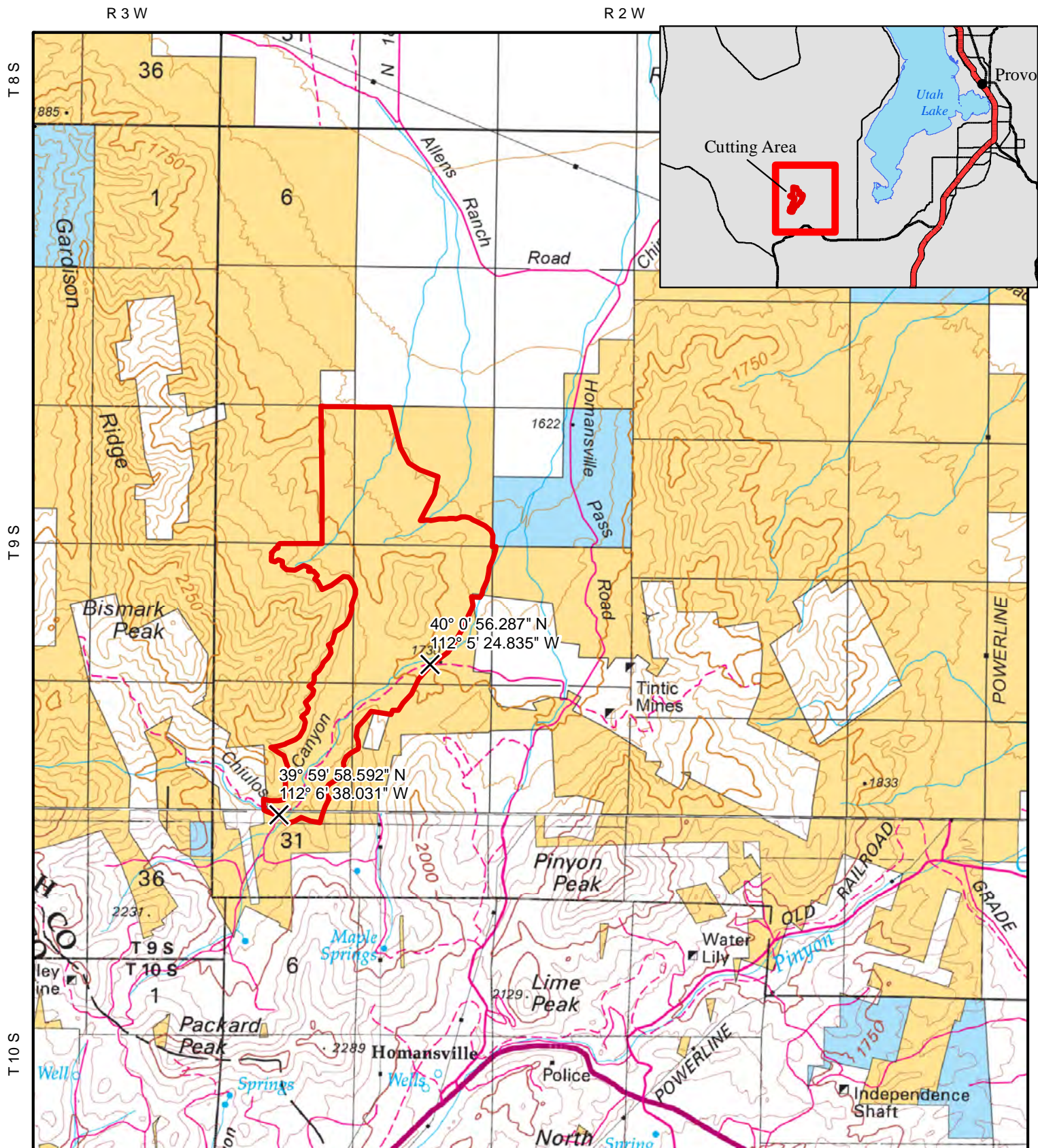


November 28, 2022

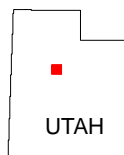
No warranty is made by the Bureau of Land Management as to the accuracy, reliability, or completeness of these data for individual use or aggregate use with other data.



Chuilos Canyon Christmas Tree Cutting Area

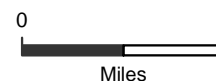


- ✕ Reference Point
- Chuilos Canyon Unit
- Bureau of Land Management (BLM)
- Private
- State

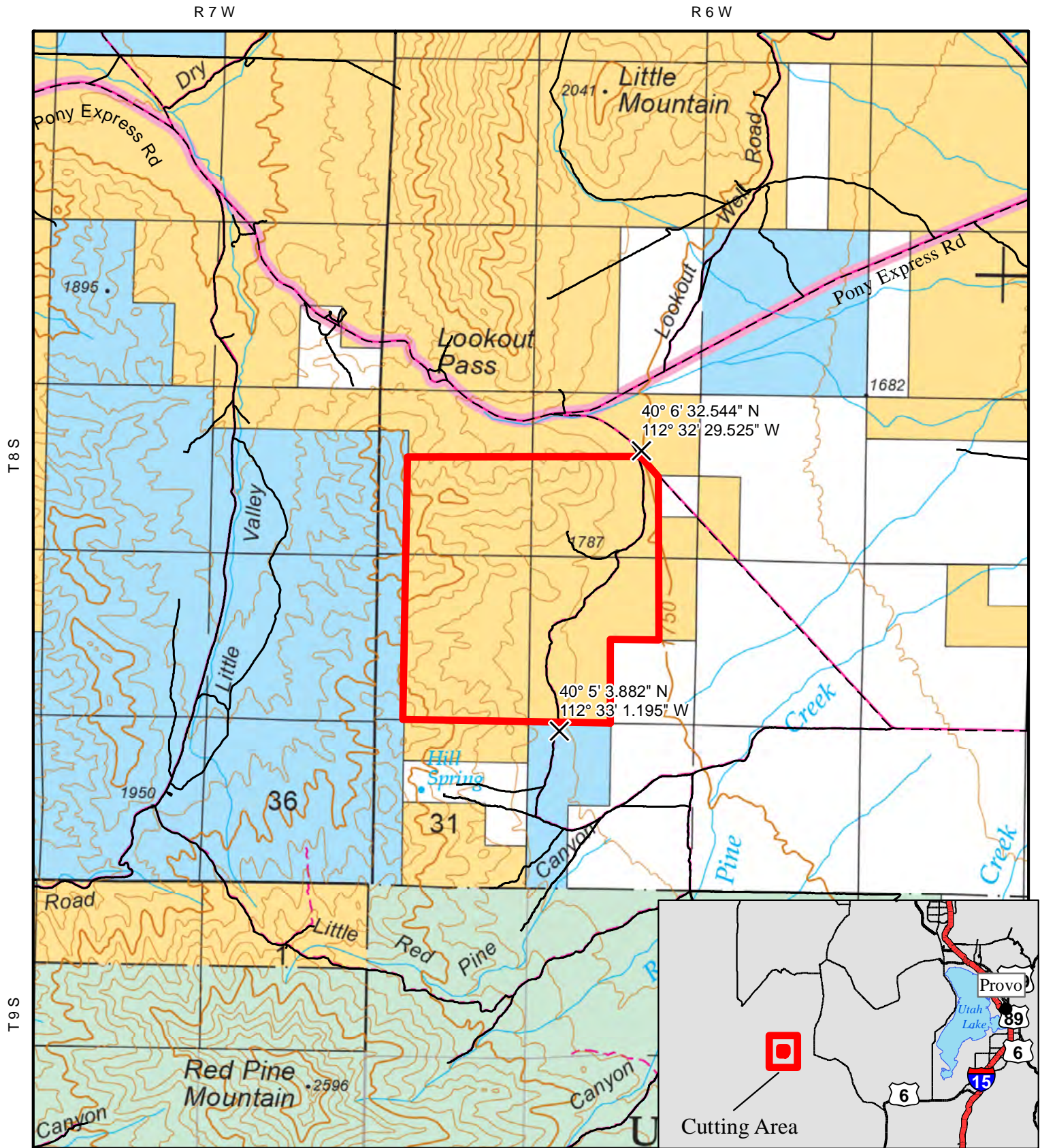


November 28, 2022

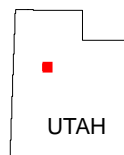
No warranty is made by the Bureau of Land Management as to the accuracy, reliability, or completeness of these data for individual use or aggregate use with other data.



Hill Springs Christmas Tree Cutting Area

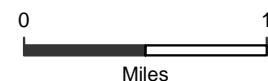


- ✕ Reference Point
- Hill Springs Unit
- BLM
- Private
- State
- USFS - Permit Does Not Include USFS Lands



November 28, 2022

No warranty is made by the Bureau of Land Management as to the accuracy, reliability, or completeness of these data for individual use or aggregate use with other data.



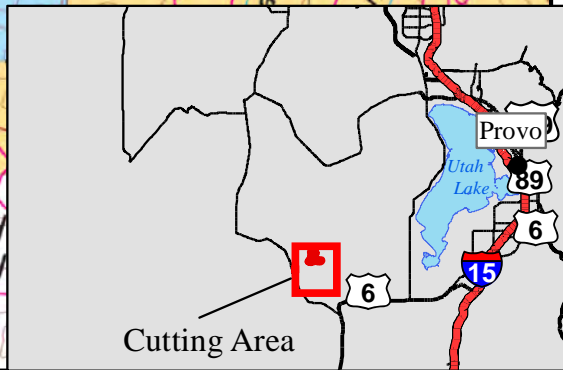
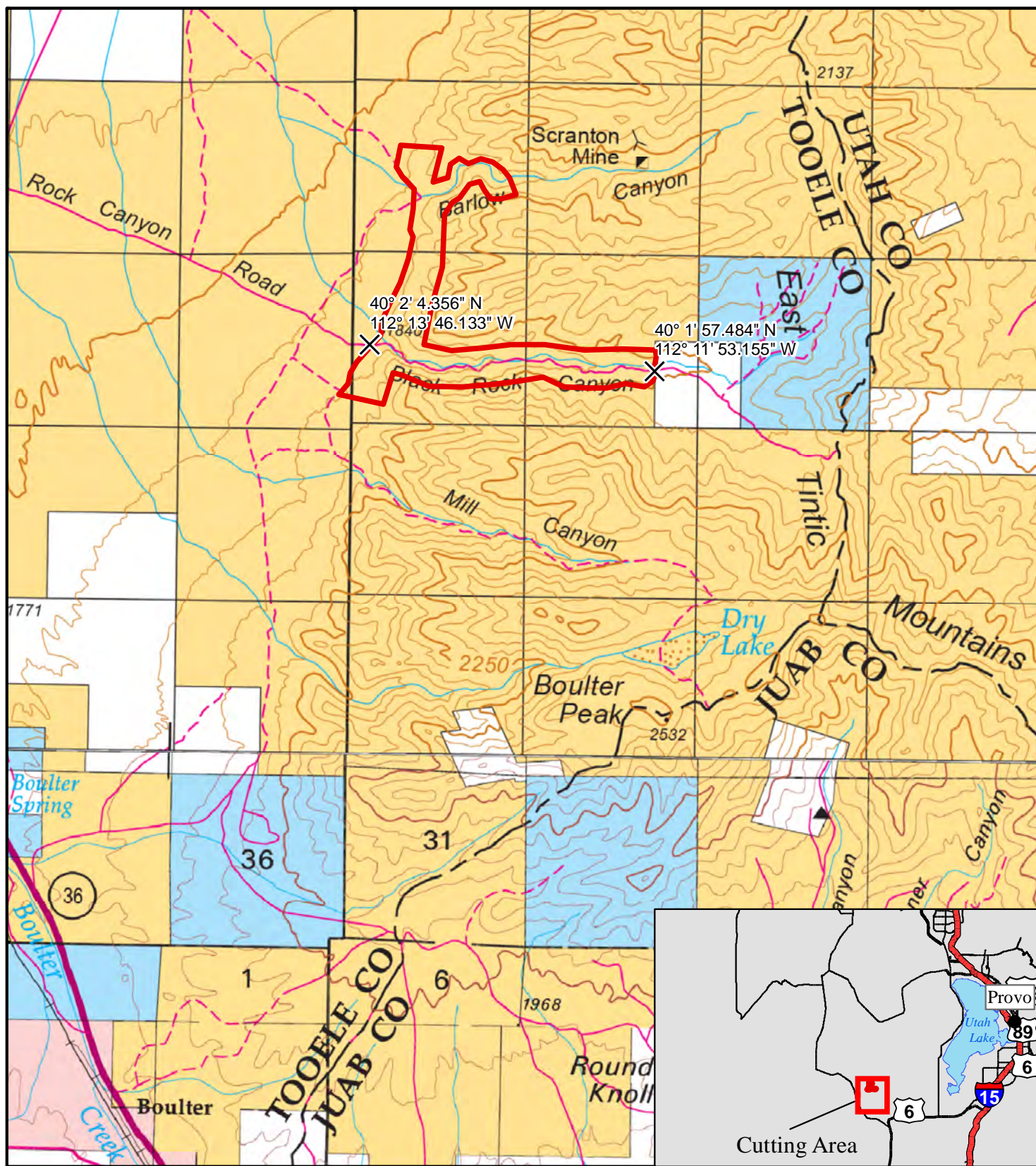
Lofgren Christmas Tree Cutting Area

R 4 W

R 3 W

T 9 S

T 10 S



✕ Reference Point

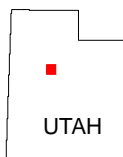
Lofgren Unit

Bureau of Land Management (BLM)

Bankhead-Jones Land Use Lands

Private

State

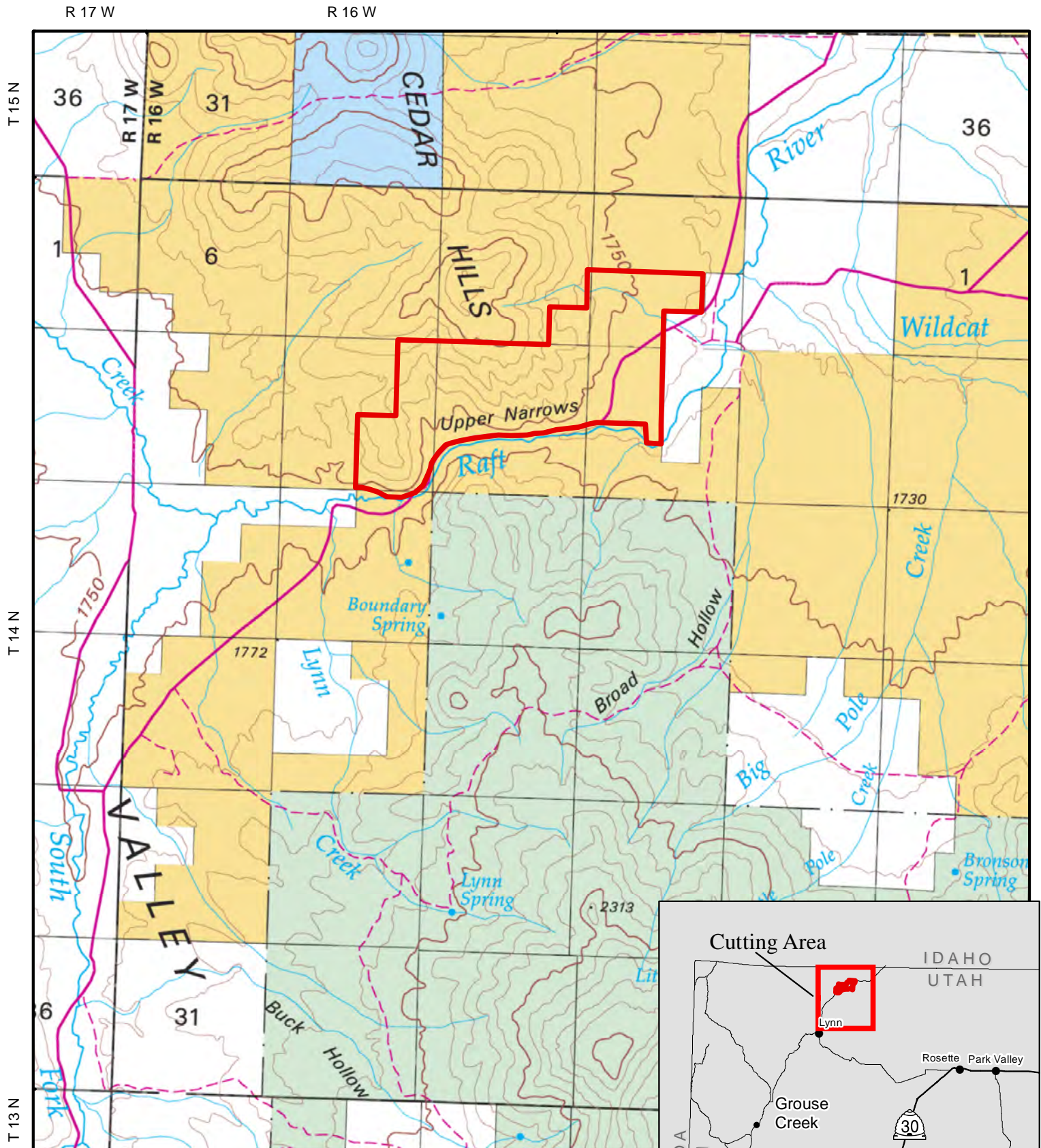


November 28, 2022

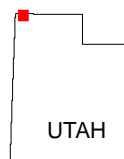
No warranty is made by the Bureau of Land Management as to the accuracy, reliability, or completeness of these data for individual use or aggregate use with other data.



Raft River Christmas Tree Cutting Area



- ✕ Reference Point
- Raft River Unit
- BLM
- Private
- State
- USFS - Permit Does Not Include USFS Lands



November 28, 2022

No warranty is made by the Bureau of Land Management as to the accuracy, reliability, or completeness of these data for individual use or aggregate use with other data.



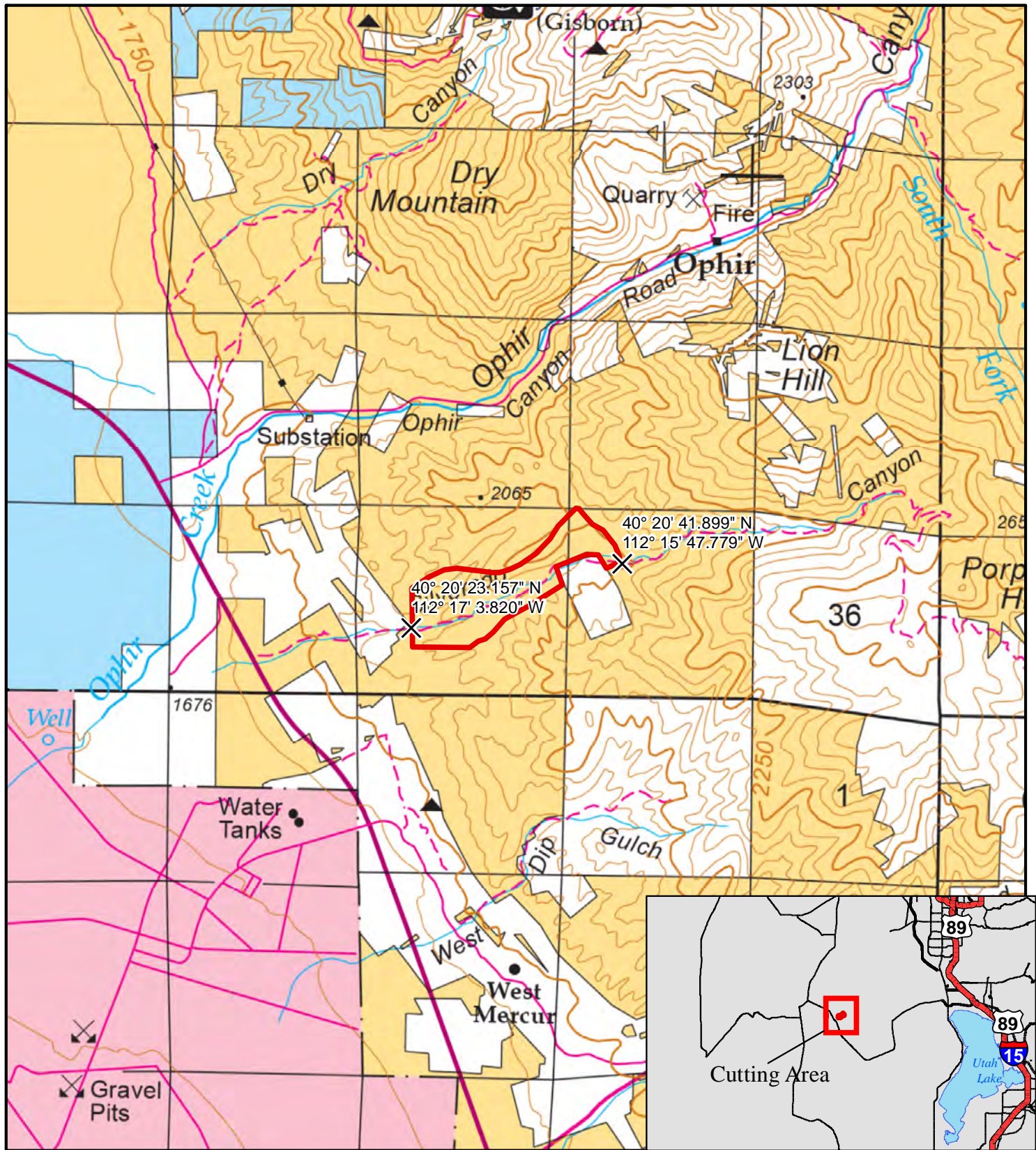
Silverado Christmas Tree Cutting Area

R 4 W

R 3 W

T 5 S

T 6 S



X Reference Point

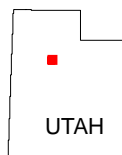
Red outline Silverado Unit

Yellow Bureau of Land Management (BLM)

Pink Military Reservations and Corps of Engineers

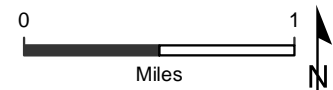
White Private

Blue State

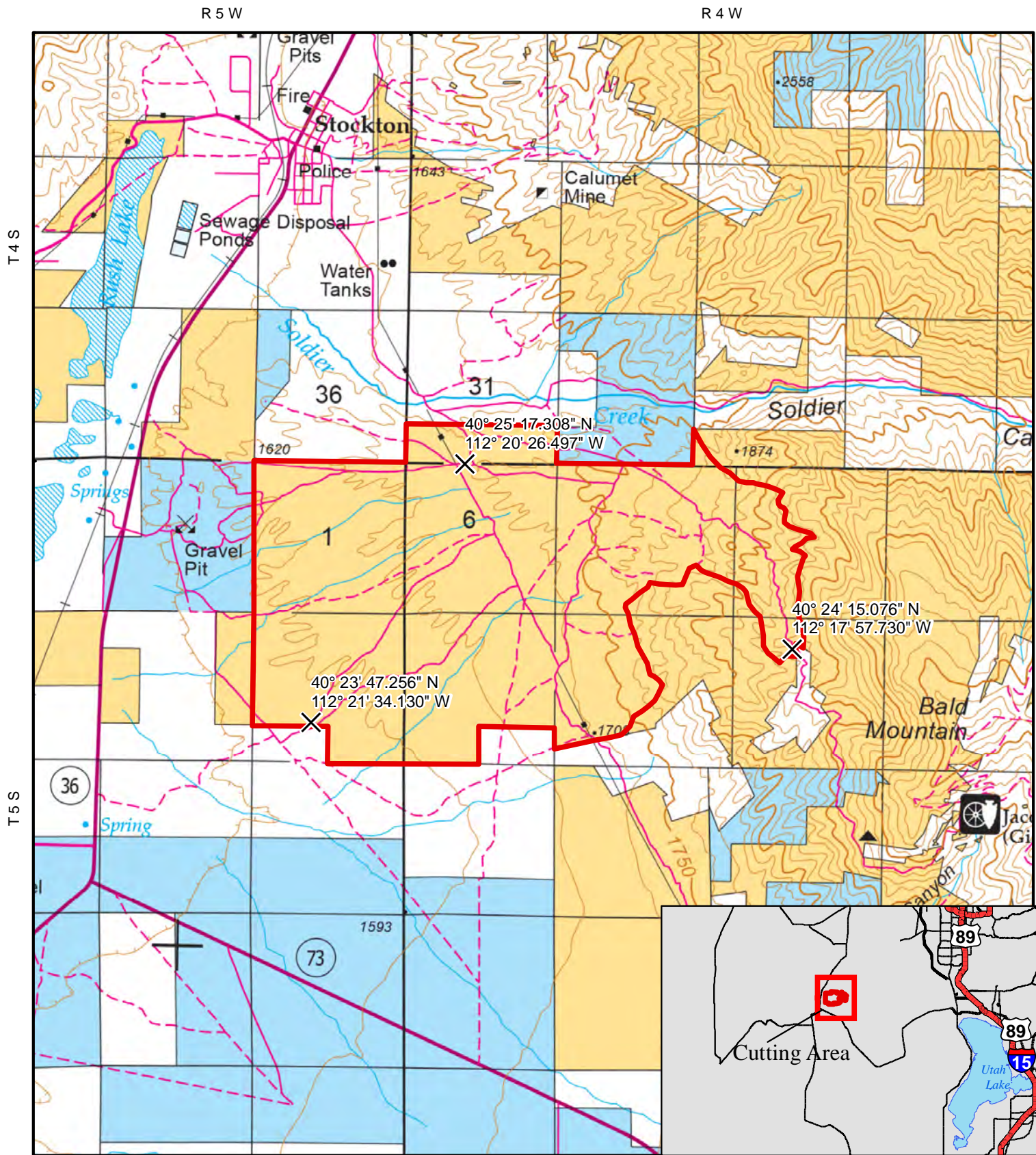


November 28, 2022

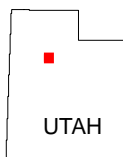
No warranty is made by the Bureau of Land Management as to the accuracy, reliability, or completeness of these data for individual use or aggregate use with other data.



South Soldier Christmas Tree Cutting Area

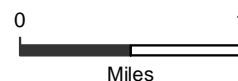


- ✕ Reference Point
- South Soldier Unit
- Bureau of Land Management (BLM)
- Private
- State

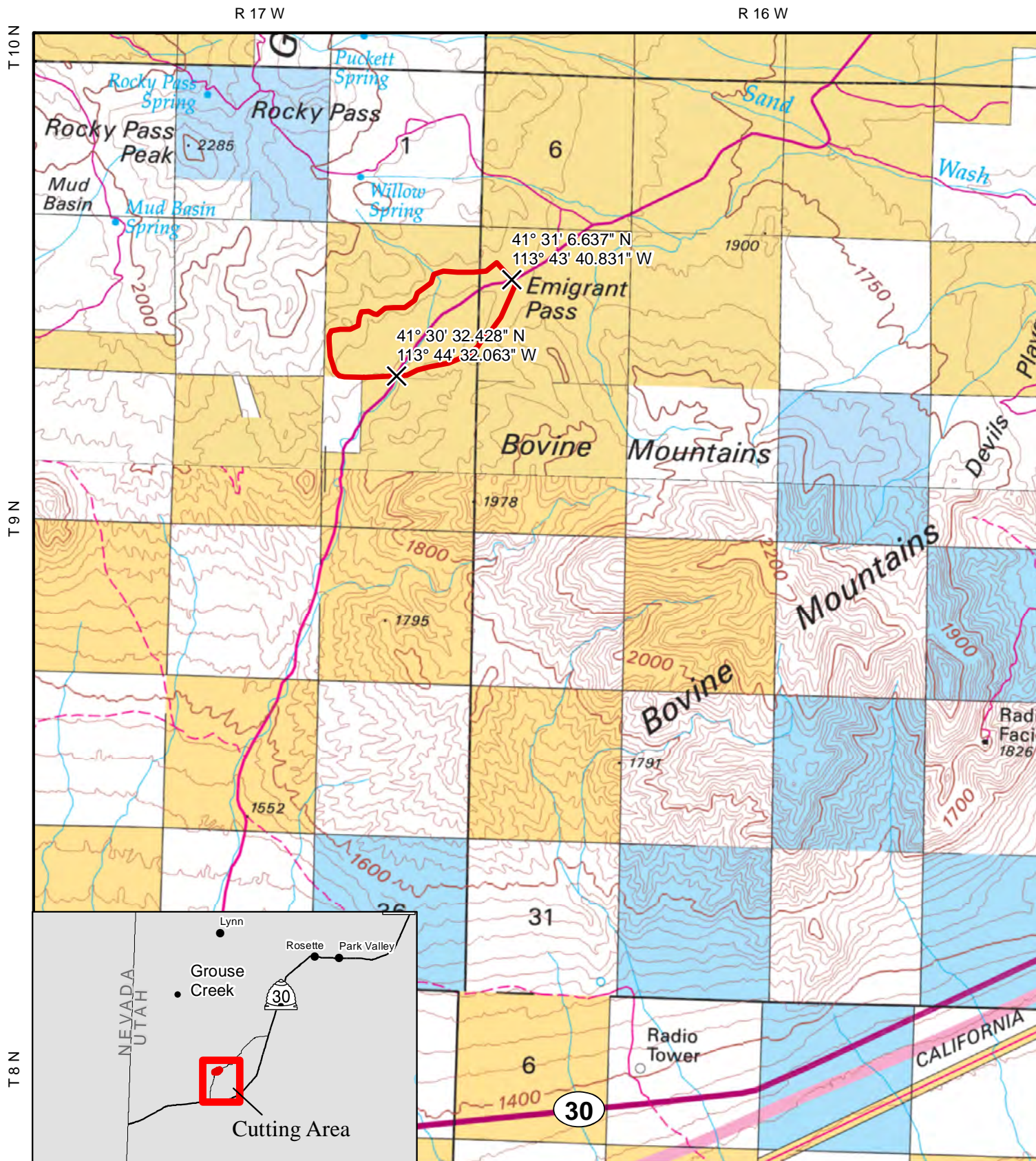


November 28, 2022

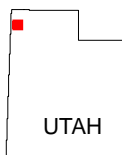
No warranty is made by the Bureau of Land Management as to the accuracy, reliability, or completeness of these data for individual use or aggregate use with other data.



West Emigrant Pass Christmas Tree Cutting Area



- X Reference Point
- West Emigrant Pass Unit
- Bureau of Land Management (BLM)
- Private
- State



November 28, 2022

No warranty is made by the Bureau of Land Management as to the accuracy, reliability, or completeness of these data for individual use or aggregate use with other data.

