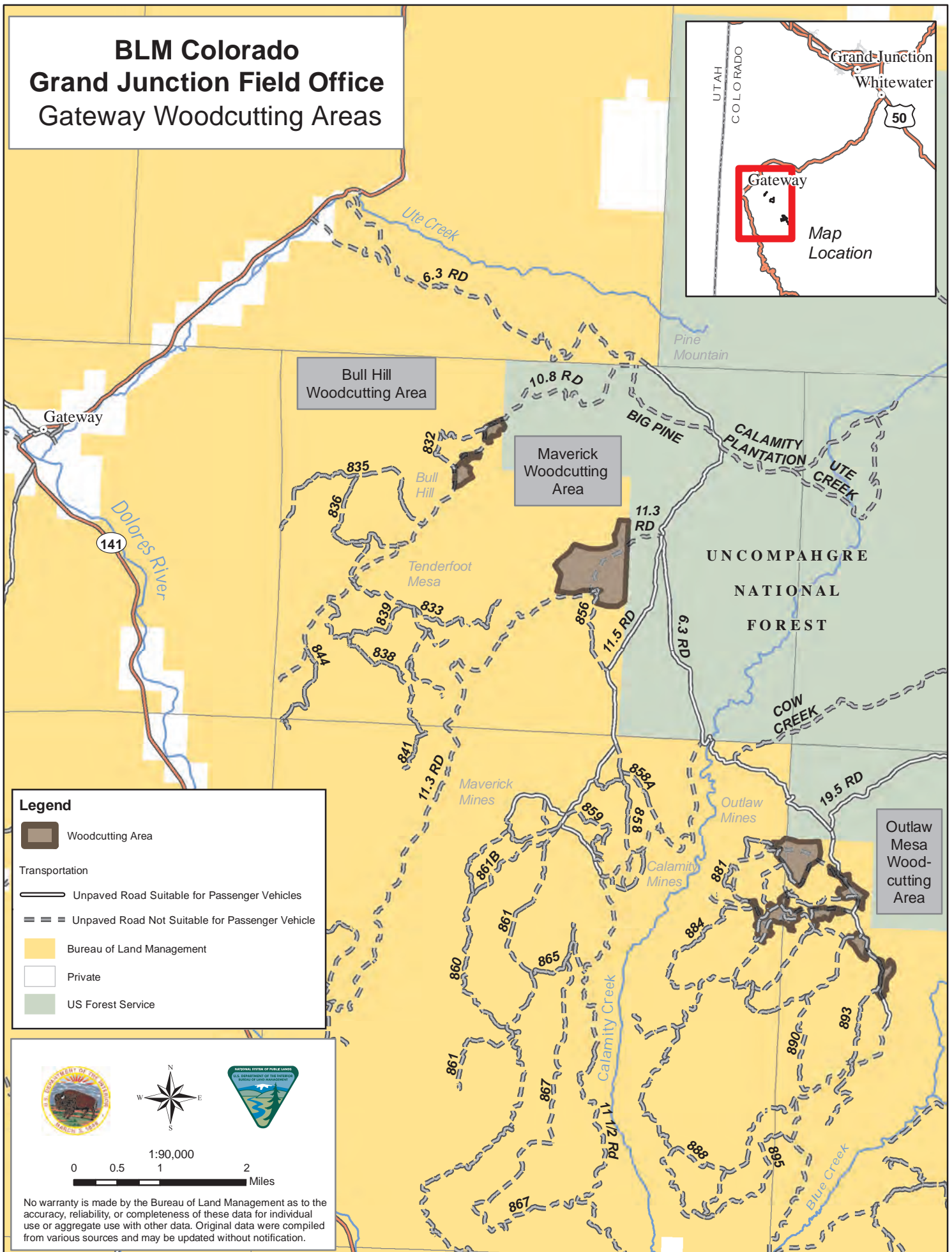
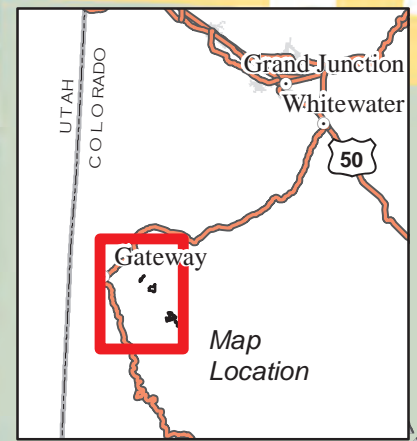


# BLM Colorado Grand Junction Field Office Gateway Woodcutting Areas



## Legend

- Woodcutting Area
- Transportation**
  - Unpaved Road Suitable for Passenger Vehicles
  - Unpaved Road Not Suitable for Passenger Vehicle
- Bureau of Land Management
- Private
- US Forest Service



0 0.5 1 2  
Miles

No warranty is made by the Bureau of Land Management as to the accuracy, reliability, or completeness of these data for individual use or aggregate use with other data. Original data were compiled from various sources and may be updated without notification.

# BLM Colorado Grand Junction Field Office Glade Park Woodcutting Areas

BLACK RIDGE  
CANYONS  
WILDERNESS

*Little Dolores River*

A.2 RD

Toms Canyon  
Woodcutting Area

*Coates Creek*

LITTLE DOLORES RIVER RD

DS RD

8 4/10 RD

7 1/2 RD

5 7/10 RD

5.70

614

618

615

614

DS RD



0 0.5 1 2 Miles

No warranty is made by the Bureau of Land Management as to the accuracy, reliability, or completeness of these data for individual use or aggregate use with other data. Original data were compiled from various sources and may be updated without notification.

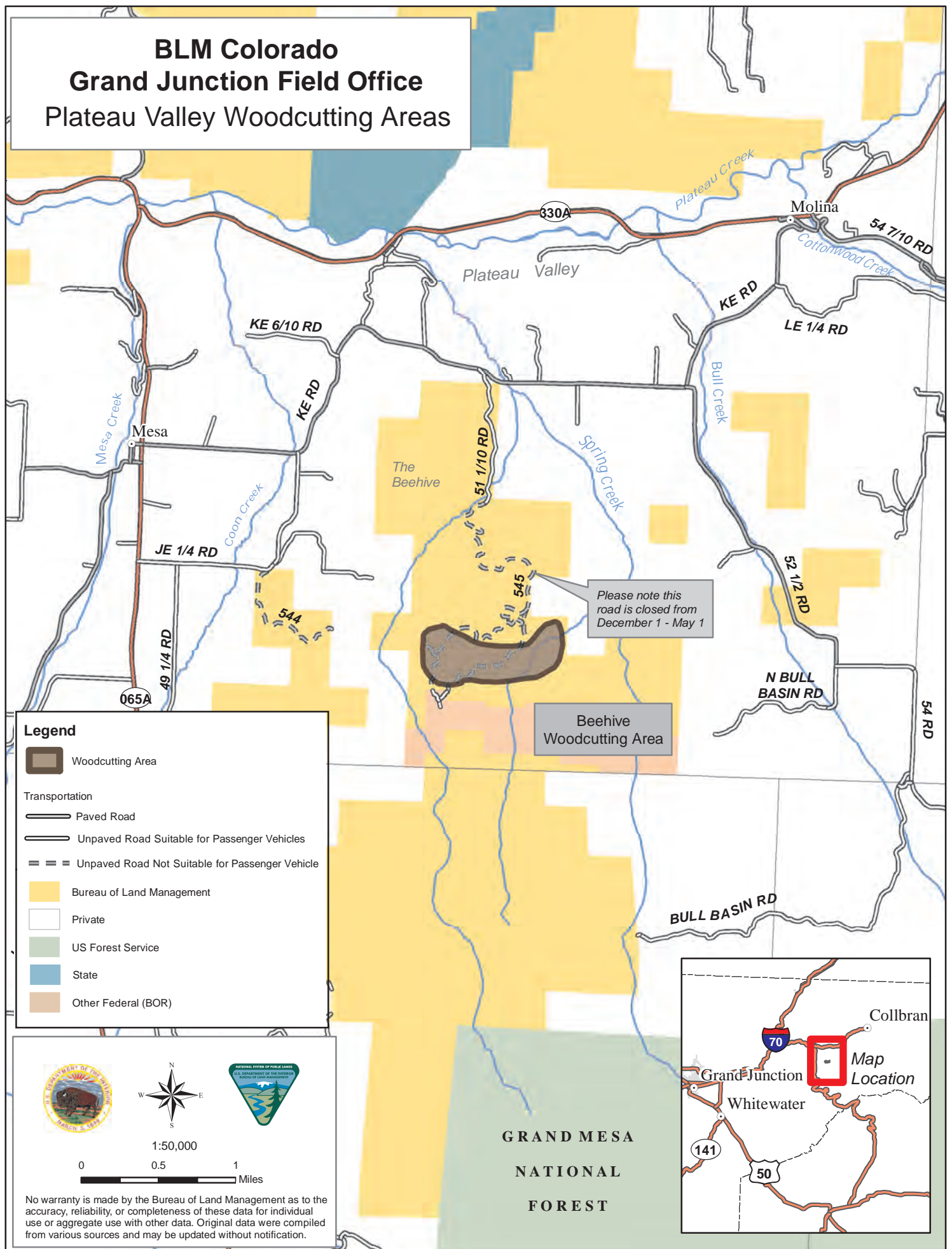
## Legend

- Woodcutting Area
- Transportation
  - Paved Road
  - Unpaved Road Suitable for Passenger Vehicles
  - Unpaved Road Not Suitable for Passenger Vehicle
- Bureau of Land Management
- Private





# BLM Colorado Grand Junction Field Office Plateau Valley Woodcutting Areas



# BLM Colorado Grand Junction Field Office Roan Creek Woodcutting Areas



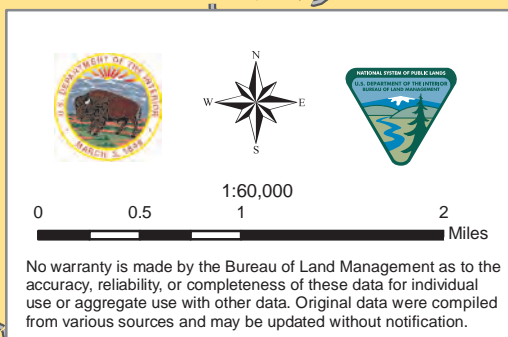
T 8 S

T 8 S

T 9 S

T 9 S

Pine Gulch  
Woodcutting Area



## Legend

- Woodcutting Area
- Areas Closed to Woodcutting
- Transportation
  - Unpaved Road Suitable for Passenger Vehicles
  - Unpaved Road Not Suitable for Passenger Vehicle
- Bureau of Land Management
- Private