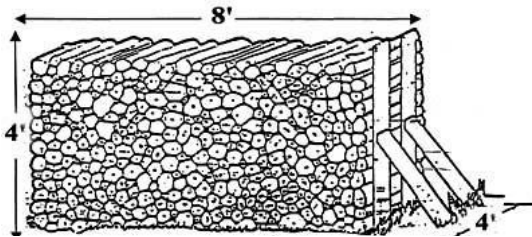




U.S. Department of the Interior  
Bureau of Land Management

## FUELWOOD MEASUREMENT GUIDE



A full cord of wood measures 128 cubic feet, typically stacked in a pile 8 feet long, 4 feet high, and 4 feet wide. A full cord can weigh up to 5000 pounds.

### Steps to Measure Your Fuelwood:

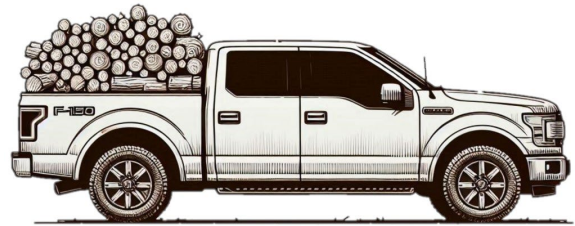
1. Arrange the wood neatly in your truck bed.
2. Measure the length, height, and width of the wood pile in feet.
3. Multiply the length, height, and width to get the volume in cubic feet ( $L \times H \times W$ ).
4. Divide the volume by 128 to find out how many cords you have.
5. Ensure you have the correct number of load tickets for the amount of wood.

### TRUCK CAPACITIES



**Small Pickup (1/4 ton)**

Holds approximately 1/2 cord with or without racks. Requires one load ticket.



**Short Bed Pickup (1/2 ton or 3/4 ton)**

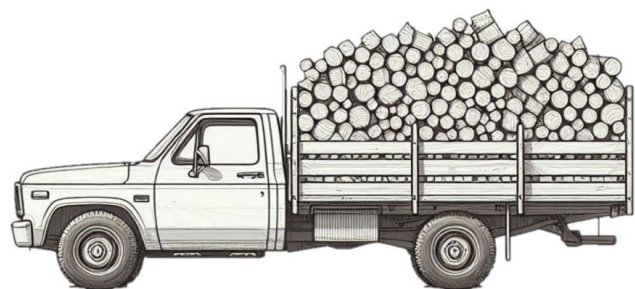
Holds approximately 1/2 cord with or without racks. Requires one load ticket.



**Long Bed Pickup (1/2 ton or 3/4 ton)**

Without racks, holds approximately 1/2 cord. Requires one load ticket.

With racks, holds approximately 1 cord. Requires two load tickets.



**Standard Flatbed Truck (1 ton)**

Holds approximately 1-1/2 cords with high racks. Requires three load tickets.