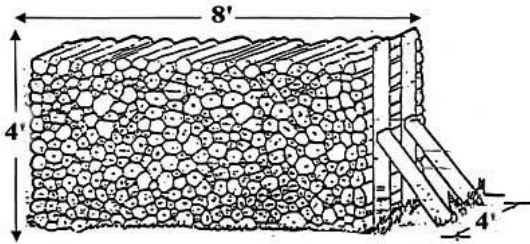




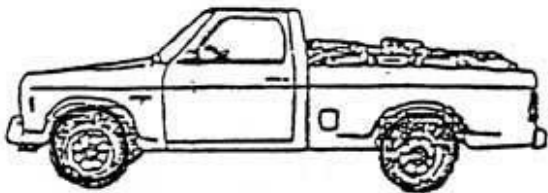
U.S. Department of the Interior
Bureau of Land Management

Measuring Your Fuelwood

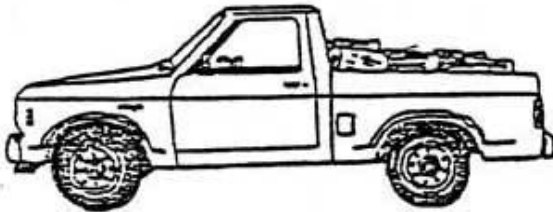


A standard, full cord of wood is a volume of 128 cubic feet, measured as a pile 8 feet long, 4 feet high and 4 feet wide. A full cord can weigh up to 5,000 pounds. To ensure that you are harvesting the correct amount of fuelwood, it is important to accurately measure the volume of wood you are collecting.

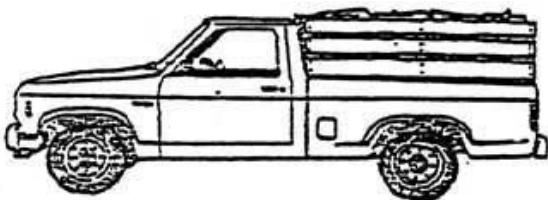
The size of your truck bed will determine how much fuelwood you can transport at once. Here are some general guidelines for estimating the capacity of different types of trucks:



Small Pickup (1/4 ton): With or without racks, this truck bed holds approximately 1/2 cord of wood. One load ticket is required.

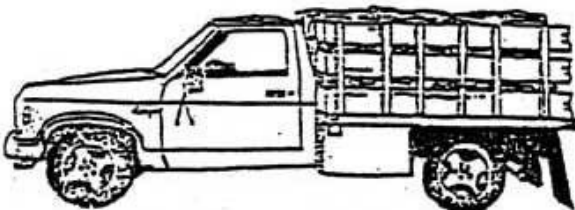


Short Bed Pickup (1/2 ton): With or without racks, this truck bed holds approximately 1/2 cord of wood. One load ticket is required.



Long Bed Pickup (1/2 or 3/4 ton): Without racks, this truck bed holds approximately 1/2 cord of wood. One load ticket is required.

With racks, this truck bed holds approximately 1 cord of wood. Two load tickets are required.



Standard Truck (1 ton): With high racks this truck bed holds approximately 1-1/2 cords of wood. Three load tickets are required.

Please note that trucks may be overloaded when filled with wood. Check the owner's manual for your vehicle to determine the maximum load weight that your truck can safely haul, and make sure your vehicle is licensed to carry that weight.